

YOUR GROUNDS

can provide an attractive setting for —

- Outdoor eating, drinking and relaxation
- Recreational facilities such as a swimming pool, tennis court, pitch and putt course, fitness trail, barbecue etc.
- Nature trails and walks
- Water features – a stream, a pond or a pool with waterfalls and fountains
- Bird watching and wildlife studies
- Photography, drawing, sketching and painting
- Meditation and relaxation
- Children's play
- In addition, I can demonstrate how the conservation of resources – such as energy, water and plants - can be used to your advantage in reducing maintenance costs.

If you would like a personal service to help you enhance your grounds in an economical way then please do not hesitate to contact me without any obligation.

Copies of my practice brochures can be downloaded from my web site www.ecodesignscape.co.uk or obtained direct from my office – details as below.

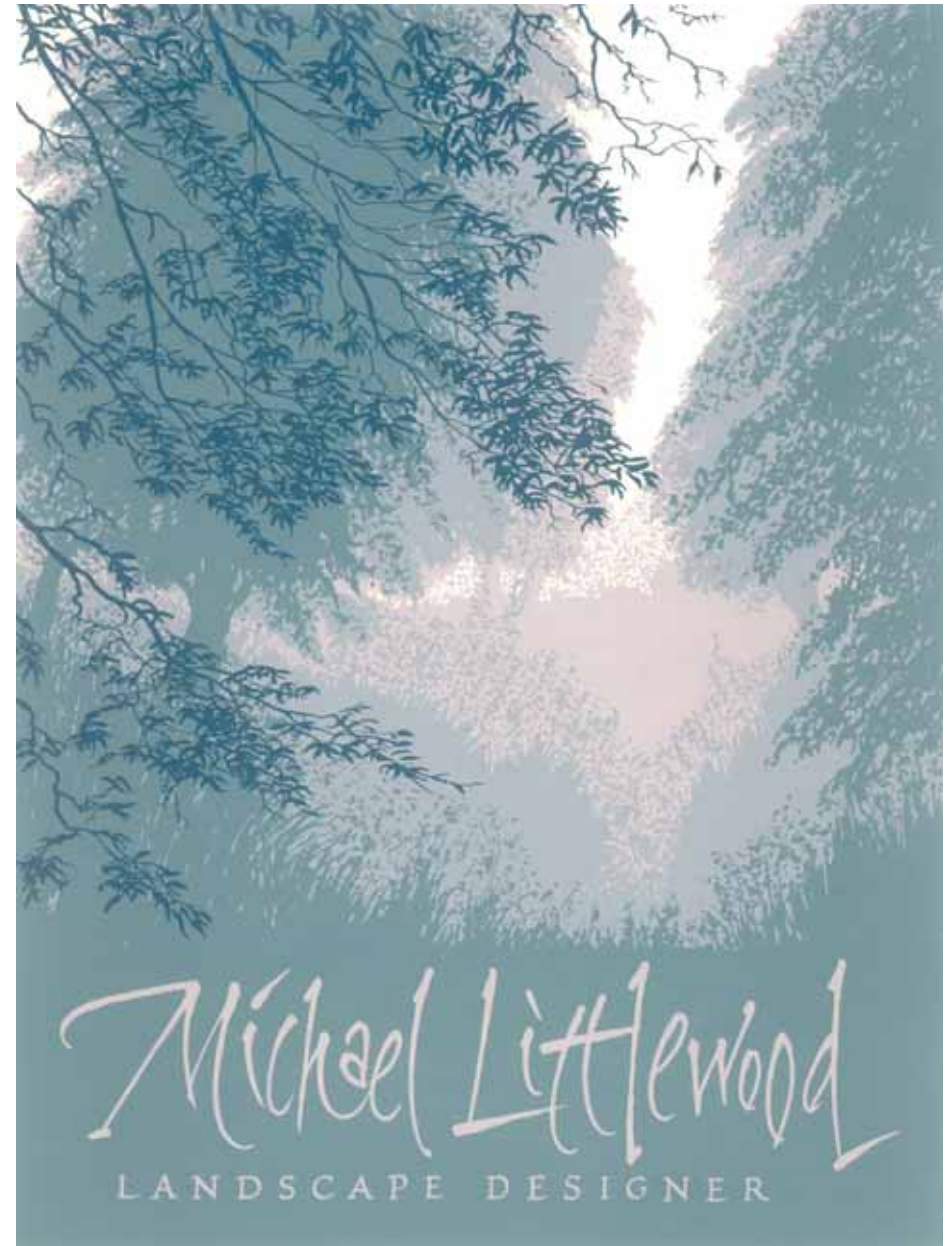
Michael Littlewood is a Fellow of *The Landscape Institute*
and a Fellow of the *Society of Garden Designers*

Michael Littlewood
LANDSCAPE DESIGNER
FLI FSGD

PO Box 25 • South Petherton • Somerset TA13 5WZ

Telephone & Fax: 01460 75515

Email: michael@ecodesignscape.co.uk Web: www.ecodesignscape.co.uk



GARDEN DESIGN - COMMERCIAL

BOLD, ROMANTIC AND SUSTAINABLE GARDENS

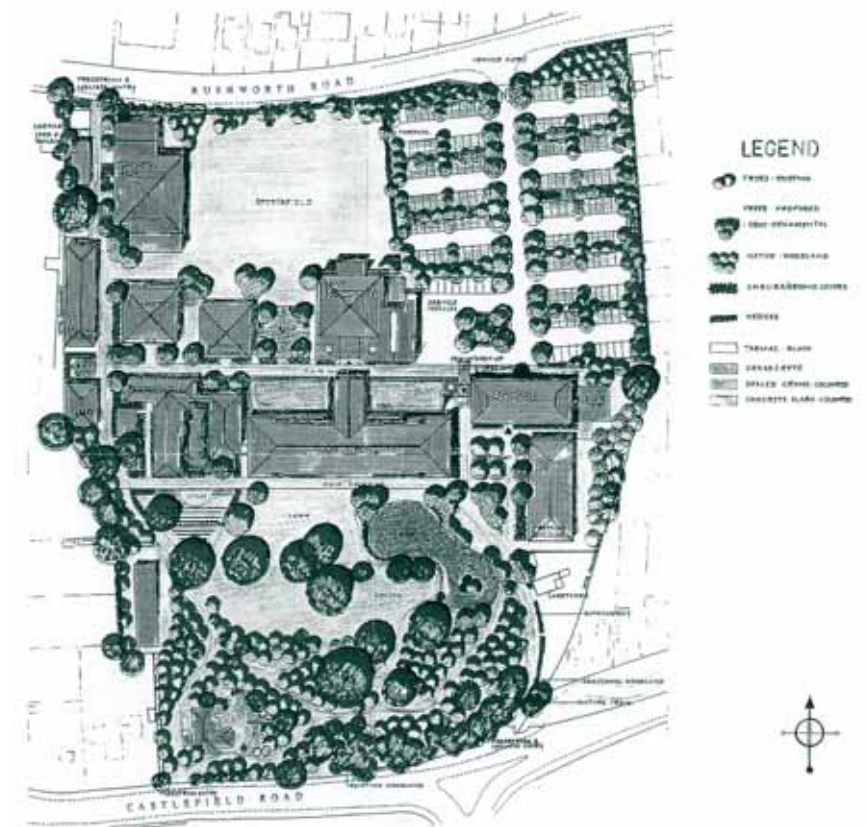
The grounds around your buildings are extremely valuable, yet often their full potential is never realised. Seen through the eyes of clients and customers some premises appear disappointing and uninspiring.

A well designed garden or leisure area is both an asset in creating the right image and a potential source of increased income for many businesses. The approach to a country hotel immediately sets the tone of the establishment. A pub or inn with a well designed outdoor area or an imaginative children's play space can attract more custom.



Many practical problems can easily be overcome by careful landscape design.

Unightly car parks and storage areas disguised, wasted spaces turned into restful gardens. A windy or exposed spot could benefit from a carefully considered tree planting scheme, together with pergola or conservatory. Where there are large internal spaces then these can be linked with exterior areas to create an image of continuous patterns of greenery.



I have a wealth of experience, both in this country and abroad, of creating landscapes and gardens that are not only bold, beautiful and romantic but also in harmony with nature.