

## YOUR GARDEN

If you decide that a professionally designed garden will enhance your home, do please contact me. I will visit your property to survey the grounds and discuss the needs of you and your family. After this first consultation I will present you with a sketch plan.

Upon approval of the sketch plan a final design will be produced, from which the construction plans can be drawn up. This will show driveways, paths, steps, walls, pools and planting areas, etc, along with the necessary specifications.

Next will come a planting plan showing the position of plants with a schedule giving their names, numbers and sizes and specifications for planting.

You will now have a complete set of plans enabling your garden to be built and planted along with quotations for all or part of the garden work. These costs can be broken down into phases so that you can proceed according to your budget. I usually supervise all the work on your behalf to ensure that it is carried out according to my plans, to the appropriate British trade standards, and especially to your satisfaction.

*Copies of my practice brochures can be downloaded from my web site [www.ecodesignscape.co.uk](http://www.ecodesignscape.co.uk) or obtained direct from my office – details as below.*

Michael Littlewood is a Fellow of *The Landscape Institute*  
and a Fellow of the *Society of Garden Designers*

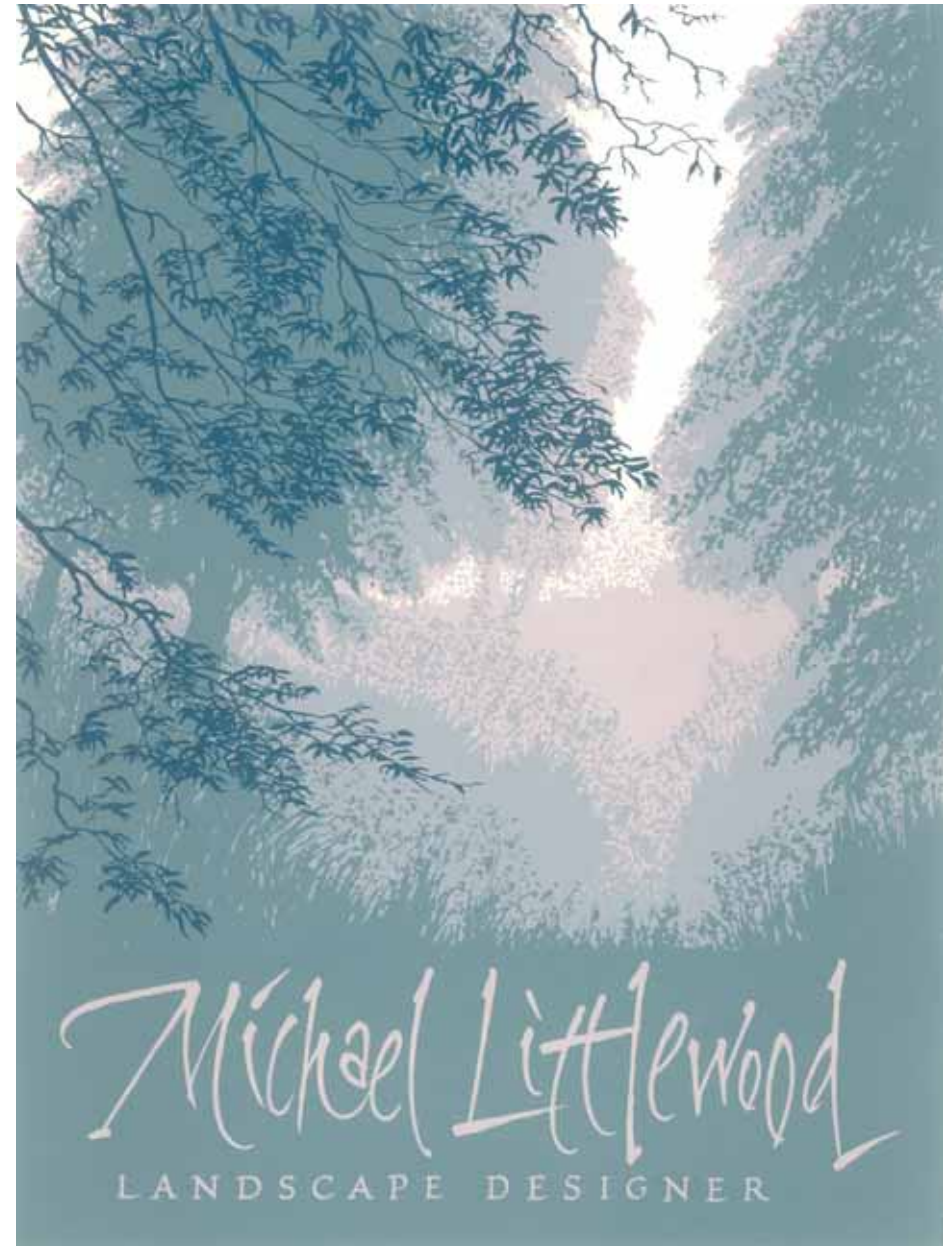
---

*Michael Littlewood*  
LANDSCAPE DESIGNER  
FLI FSGD

PO Box 25 • South Petherton • Somerset TA13 5WZ

Telephone & Fax: 01460 75515

Email: [michael@ecodesignscape.co.uk](mailto:michael@ecodesignscape.co.uk) Web: [www.ecodesignscape.co.uk](http://www.ecodesignscape.co.uk)



GARDEN DESIGN – RESIDENTIAL

# BOLD, ROMANTIC AND SUSTAINABLE GARDENS

Gardens have always provided a sanctuary in which to escape from the harsh and dangerous environment outside, a place of seclusion, relaxation and recreation for the whole family.

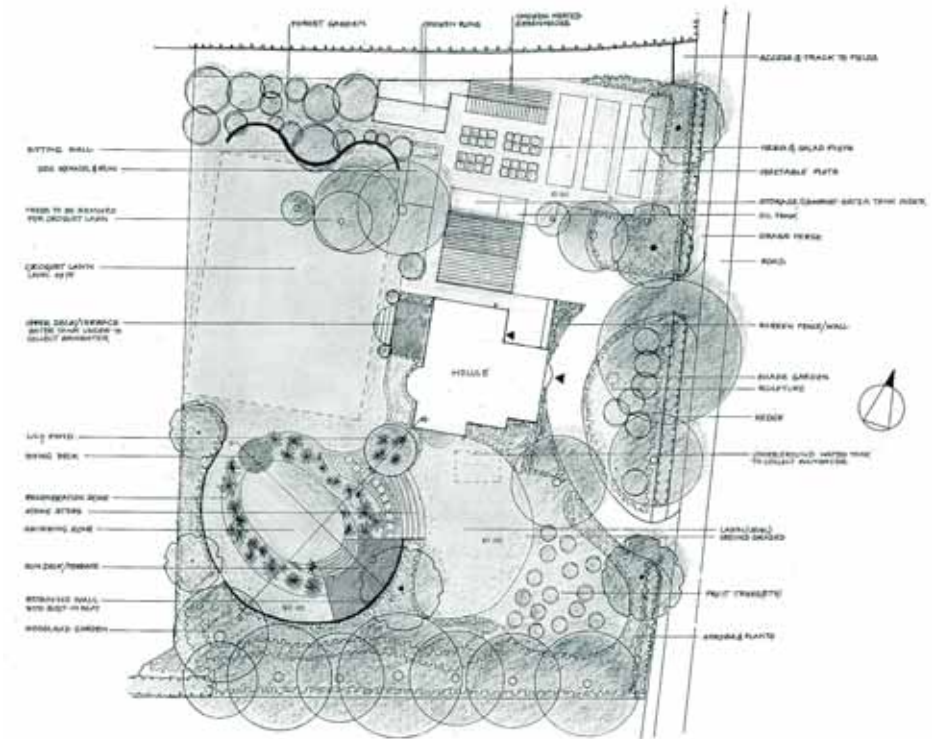
Your garden is an extension of your home – an outdoor room; a place for you, your family and friends to play and relax. It should be an intimate space with privacy and protection, a practical place with room for activities such as barbecues, children's play, games, sunbathing and entertaining. All enclosed and contained by beautiful trees, shrubs and plants.



Planning the space in a garden for all these activities is just as important as planning the interior of your home. With many gardens being smaller today than in the past it becomes even more essential to ensure that the design of the garden fulfils all your desires and dreams. Whether it is a new site or an existing garden that needs alteration, all your requirements need to be considered.



A common problem with a garden is deciding where to start, but to overcome any worries or concerns you may have, I offer a Design Service that will help you to have the bold, romantic, beautiful garden that you have always wanted and will be proud to own. It can also be sustainable.



My designs can

- Save you time and avoid the worries of making costly mistakes with the necessity for further alterations
- Enable you to use your garden to its full potential and make maximum and immediate use of all the space available
- Create a pleasant place with privacy for all members of the family to use throughout the year
- Increase the value of your property
- Enable the work to be phased according to your budget
- Ensure the garden is built to your satisfaction.